

L240-XXX-D4

Low intensity red obstruction light

Red obstruction light for night time marking of structures that present a hazard to aviation. Red steady/ infra-Red burning in night mode. Incorporates the benefits of advanced LED, optical and system control technologies to meet the most demanding applications.



KEY FEATURES

- Five year warranty
- Housing based on 30 years of offshore product design experience
- Lightweight and easy to install
- Extremely low wind factor
- Integrated design with built-in photocell and monitoring – no additional power supply enclosures required
- Optional heater function for de-icing
- No maintenance required over service life
- Orga optical design produces highly accurate and uniform narrow light beam
- Extremely low power consumption
- Long life power supply to match LED life, does not use electrolytic capacitors
- Steady burning visible red light output with optional additional IR light output
- Made in The Netherlands

STANDARDS/CERTIFICATION

- Complies with ICAO Annex 14 Volume 1, Seventh Edition, July 2016, Chapter 6, Low Intensity

PERFORMANCE CHARACTERISTICS

- Horizontal beam pattern: 360°
- Intensity Red light: See table
- Intensity IR light: >25 mW/sr
- Infra-Red wavelength ~850nm
- Infra-Red beam follows visible light, or beam is according to local standards

ELECTRICAL CHARACTERISTICS

- Operating voltage: 48 Vdc; 40-64 Vdc
- Power consumption: See table
- Overvoltage protection: Class III according to IEC61643-1

PHYSICAL CHARACTERISTICS

- Dimensions: (L x W x H):
See drawing
- Weight: <3kg
- Design degree of protection: IP66
- Operating temperature range: -40°C/+55 °C
- Supplied with pre-mounted Orga cable for easy installation and high reliability
- Cable bending radius static: 7x cable diameter
- Outer cable diameter: Ø12.5 +/- 0.5 mm
- Cable weight: 260 g/m

SYSTEM DESIGN, CONTROL AND MONITORING

- Use as a stand-alone light, or in a multiple light system with an Orga CIP controller
- Optional Orga CIP controller facilities provides control interfaces for:
 - “smart switch” aircraft detection input
 - Visibility condition variable intensity input
 - Visibility condition variable intensity input; intensity steps 30% and 10%
 - Remote photocell control input/override



L240-XXX-D4

Low intensity red obstruction light

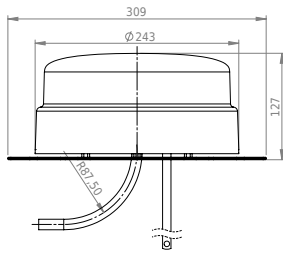
Product	Additional information								
Type	Light performance			Power consumption (W) @ 20 °C			Heater* < 0 °C	Heater* >0 °C and <10 °C	Standard
	Day	Tw	Night	Day	Tw	Night			
L240-62A-IRF-D4	-	-	10 cd Steady Red and IR	1 W	1 W	2.7 W	-	-	ICAO
L240-62A-IRF-H-D4	-	-	10 cd Steady Red and IR	1 W	1 W	2.7 W	16 W	8 W	ICAO
L240-62Aa-IRFa-D4	10 cd Steady Red and IR	10 cd Steady Red and IR	10 cd Steady Red and IR	2.7 W	2.7 W	2.7 W	-	-	ICAO
L240-62B-IRF-D4	-	-	32 cd Steady Red and IR	1 W	1 W	4.4 W	-	-	ICAO
L240-62B-IRF-H-D4	-	-	32 cd Steady Red and IR	1 W	1 W	4.4 W	16 W	8 W	ICAO
L240-62Btn-IRFtn-D4		32 cd Steady Red and IR	32 cd Steady Red and IR	1 W	4.4 W	4.4 W			
L240-62Btn-IRFtn-H-D4		32 cd Steady Red and IR	32 cd Steady Red and IR	1 W	4.4 W	4.4 W	16 W	8 W	ICAO



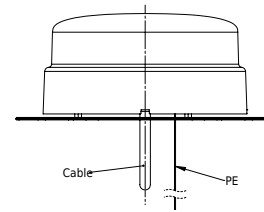
L240-XXX-D4

Low intensity red obstruction light

FRONT VIEW



RIGHT VIEW



BOTTOM VIEW

